

Transparent Fish Fund Donor Book 2012



Transparent Fish Fund

Transparent Fish Fund has performed all due diligence related to the reports contained herein. Visit our website to see original disclosures.

© Copyright 2012 Transparent Fish Fund. All rights reserved.

Transparent Fish Fund is a 501(c)(3) U.S. non-profit organization founded in 2011 in Palo Alto, California, established exclusively for charitable purposes to connect credible East Asian grassroots NGOs with individuals from the West. The greater mission behind this work is to foster a sustainable long-term NGO culture in East Asia and, in doing so, to spread a global spirit of philanthropy.



Artwork created by a high school student at Xingzhi Migrant Art Class, a TFish Fund partner NGO.

Thank you for your generous donations and support.
For this Holiday season, we would like to highlight some of the impact that your efforts have had on empowering grassroots NGOs.

From all of us here at the Transparent Fish Fund,
Happy Holidays and Thank You



In 2012, TFish Fund supported nearly 200 NGOs in East Asia. There are three levels of partnership: friends, associate members, and strategic partners. This donor book will highlight program updates of our strategic partners.

125 Friends
50 Associate Members
20 Strategic Partners

Medical

Shalom Leprosy



Leprosy

For over a decade, despite receiving little or no funding, support, and recognition, Dr. Liang has faithfully served the needs of lepers shunned and forgotten by society.

In October 2011, TFish Fund began funding Dr. Liang's transportation fares to visit seven leprosy villages nearby Kunming, allowing her to provide continuous medical care and food to her leprosy patients.

Page 5

Little Red Scarf



Congenital Heart Disease

Children with congenital heart disease often die before reaching adolescence. Little Red Scarf intervenes to give these children new hearts, thus renewing their dreams and aspirations.

In 2012, LRS completed 200 operations, contributing to a grand total of 866 surgeries performed since 2008.

Page 6

Helping Orphans Worldwide



EB Skin Disease (Epidermolysis Bullosa)

EB is a rare disease that causes the skin to become so fragile that a even a slight touch will cause it to break – HOW cares for EB's young victims, including Khoi pictured to the left. HOW is a US 501(c)3 non-profit organization

TFish Fund sponsored 20 wound care kits, 250 instruction DVD manuals, and administrative costs for this project.

Page 12

Hemophilia Home



Hemophilia

Children with hemophilia suffer from uncontrolled and unstoppable bleeding, and their poor families cannot afford the expensive treatments. Through fundraising and advocacy efforts, Hemophilia Home reverses both of these realities.

TFish Fund supported a new hemophilia program in Xi'an to provide medical fees for 12 poor children suffering from hemophilia.

Page 16

Burma Humanitarian Mission



Backpack Medicine

In face of political instability, human rights violations, and poverty that have torn through Burma in recent years, local backpack medics trained by BHM work to bring healing and hope. BHM is a US 501(c)3 non-profit organization.

With TFish Fund's support, BHM provided 1 million doses of medicine, and backpack medics visited 140 villages and treated 20,170 patients primarily for malaria, pneumonia and dysentery.

Page 17

Community & Volunteerism

Zhou Counseling



REGION
HEBEI, CHINA

Mental Counseling for Rural Women

In a society where mental disorders are often dismissed or are considered taboo, Mrs. Zhou provides free consultation to rural women and children who struggle with mental health issues.

TFish Fund aided Mrs. Zhou with administrative costs, which allowed her to serve more villages in need this year. She visited more than 12 villages and gave over 20 life-coaching lectures.

Page 15

Xian Volunteer



REGION
SHAANXI, CHINA

Volunteerism

Whenever the Xi'an Volunteer Association takes on a need in the community, thousands of people from its immense network of volunteers turn out to give their time, resources, and care for the public good.

TFish Fund covered administrative costs involved in providing school tuition to more than 100 poor students and mobilizing volunteers across Xi'an to serve the poor in their community.

Page 18

Education

Xingzhi Migrant Art



REGION
BEIJING, CHINA

Art & Design Studio for Migrant Children

Through creative art and design education, a talented artist and teacher motivated migrant students of a deserted school to develop self-confidence and become self-sufficient.

TFish Fund supported an outdoor painting class with art supplies for 29 students in Yanchi, Beijing.

Page 8

BNU Service Learning



REGION
BEIJING, CHINA

Grade 1-6 Service Learning Curriculum

This is a long-term (5-year) program at Beijing Normal University that consists of multi-pronged efforts to develop and introduce Service Learning to Chinese students in grades 1-6, their parents, school officials, and policy makers.

The goal is to help advance Chinese education beyond its current textbook-and-lecture-focused structure. Its impact could be profound and long-lasting.

Page 10

Poverty

Wild Lily



REGION
GUANGXI, CHINA

Egg Nutrition

In the destitute mountain regions of western China, a nutritious meal is hard to come by. Wild Lily volunteers trek through treacherous terrains to provide protein-rich eggs to hungry schoolchildren.

From September 2011, TFish Fund funded 349 children to receive an egg every day at the Shengli primary school. We also funded Wild Lily's administrative costs to allow them to focus on carrying out effective programs.

Page 11

Light of Love



REGION
GUIZHOU, CHINA

School Lunch Nutrition

Light of Love provides warm healthy meals to poor students in western China. As beneficiaries of this love, the children will grow up to become a light of love themselves.

TFish Fund sponsored free daily lunches for 55 poor students at the Lutang primary school this year in Guizhou, China.

Page 13

Little Red Scarf CARE



REGION
GANSU, CHINA

Poverty Relief

LRS CARE works to create a collaborative network of families in poverty, providing them relief and helpful resources.

LRS CARE delivered 182 nutrition boxes to children after heart surgery and 179 sets of school supplies for poor children in Gansu. Two families received subsidy to return loans for heart surgery, and four students received scholarships for tuition.

Page 14

Due Diligence

TFish Fund's rigorous due diligence processes, dedicated field partners, mandatory financial disclosures, and project disclosures ensure accountability and transparency for all partner NGOs, enabling donors and volunteers to safely invest their resources.

Page 1

More Partners



Environment

Greenland Volunteer
Gansu, China



Youth & Volunteerism

Clover Youth
Guangdong, China



Elderly Care

Mianzhu Family
Sichuan, China



Poverty Relief

Xinyang Volunteer
Henan, China



Farmer's Co-Op

Farmer's Association
Anhui, China



Eyeglasses for Deaf Students

Rainbow Village
Yunnan, China



Accounting

Class for NGOs

nFriends
Beijing, China



Publications for NGO Development

Rural Experts
Chongqing, China



DUE DILIGENCE

TFish Staff journey far and wide to perform field visits



SHALOM LEPROSY



RAINBOW VILLAGE



WILD LILY

TOGETHER WITH OUR PARTNERS

2012 has been an exciting year of growth for TFish Fund, with nearly 200 grassroots non-profits joining our family and a dozen of them being promoted to Strategic partnership. In spite of this development, we have not delayed conducting due diligence and visiting our partners on the field, ensuring that they are utilizing their funds strategically and providing the highest standard of care to their beneficiaries.

Of course, getting in touch with our partners meant spending hours on the road and trekking through rugged mountain terrains, but our reward was well worth the arduous journey. We got to accompany Dr. Liang as she carefully washed the lepers' deteriorating hands and feet; we witnessed smiles spread across a classroom as Wild Lily volunteers passed out freshly cooked eggs; we were moved when a student from the Xingzhi Migrant Art Class offered us a painting he had made for us.

Over the course of many weeks, TFish Staff traveled to Beijing, Chengdu, Gansu, Yunnan, Xi'an, Henan, Vietnam, and Cambodia, and caught up with our partners.



XIAN VOLUNTEER



XINYANG VOLUNTEER





WORKING TO TRANSFORM LIVES

In late October, we traveled to Vietnam to meet the dedicated staff of HOW and the children that the organization serves. There, we encountered Khoi, a little boy whose severe EB condition required 3 to 5 hours of daily wound treatment. With no electricity, clean water, or even a place to buy medical supplies, his situation was dire. Thankfully, HOW's staff were present to embrace Khoi and his family, offering them loving encouragement and practical support.

While we set out to do due diligence to investigate HOW's work, we returned immensely blessed and touched. It was the same when we visited Hemophilia Home, Little Red Scarf, or any of our other major partners. They were laboring day after day, using whatever limited resources they had at hand to serve those in unimaginable need. It is an honor for us to support these grassroots non-profits, and we thank you for joining us in this worthwhile endeavor.

TFISH FUND 2ND ANNUAL CONFERENCE

Also in 2012, we held regional conferences for our partners to share field experiences and encourage one another. These conferences allowed us to meet face-to-face with the organization leaders and equip them with technical support, preparing them for the upcoming year.



BEIJING



LANZHOU



CHENGDU



Shalom Leprosy Compassion Ministry



Year Founded: 2000
TFish Member Since: 2011



Region:
Yunnan, China



Leader:
Dr. Liang



Cause:
Medical

Dr. Liang and a group of volunteers have been providing care to a leprosy rehab village for over a decade. In China, people with leprosy are sent to isolated places without family nearby to offer emotional or physical support. Having to take care of one another, they are essentially abandoned and forgotten by society.

Through organizing trips for domestic and foreign volunteers to travel to leprosy villages, the Shalom Leprosy Compassion Ministry is able to provide medical, living, and psychological assistance to this population in need.



Prior to meeting TFish Fund, Dr. Liang seriously considered discontinuing her work after years of discouragement from lack of support and financial difficulty. However, in 2011, TFish Fund provided her the moral support and funding to freely continue her work. Through donations, Dr. Liang leads a leprosy care project that provides leprosy patients with nutritional and living support that improve their quality of life.



Dr. Liang and volunteers eagerly build relationships with the leprosy patients. One of their favorite acts of service is washing and pampering the patients' oft-disfigured feet, an expression of humility and love. While many might consider lepers as being helpless, Shalom Compassion treats them like kings and queens.



Leprosy bacteria attack the nerves in the hands, feet, and around the eyes, rendering them prone to infection and permanent damage. Shalom Compassion volunteers and donors are committed to making daily life easier for the patients by providing various medical treatments and eye glasses.



Little Red Scarf Heart Surgery Program



Year Founded: 2005
TFish Member Since: 2011



Region:
Gansu, China



Leader:
Nancy Nguyen



Cause:
Medical

Congenital heart disease (CHD) in rural Gansu Province is highly prevalent. As many as one in 125 children may be born with the disease, but most children come from impoverished families and thus are unable to afford treatment. Little Red Scarf finances surgeries and other medical treatments for these youth. Additionally, local LRS staff and volunteers provide social and emotional support to children and their families during their hospital stay.

In 2012, LRS completed 200 operations, for a total of 866 surgeries since 2008. LRS is aiming to complete 1,000 surgeries by the end of this year.



CunHua entered the hospital in October displaying severe symptoms of CHD. However, within just hours of a successful operation, CunHua's clubbed fingers had reduced in size and healthy color had returned to her skin.

Seanan Fong was an intern with LRS during the fall of 2010. He spent 10 weeks on the ground shadowing and blogging about the experiences of the children going through the program. In 2012, he wrote an article for the Stanford Journal of Public Health on the work of LRS and the need for CHD treatment in rural Gansu.

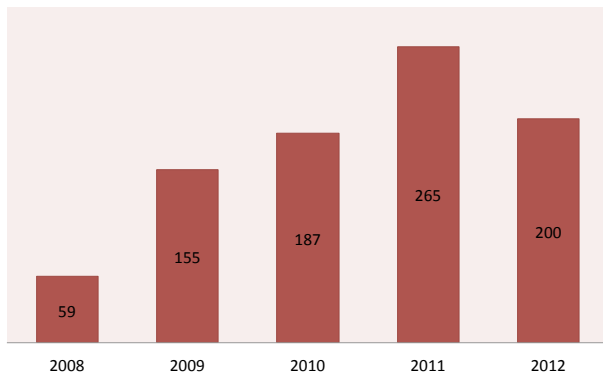


In January, LRS received a candid letter from Little Na, a young girl who successfully recovered from CHD following her surgery. In the letter, Little Na writes:

"When I was sick, you made me feel warm; you gave me a new heart; you gave me confidence; and you made my dream come true. I am very thankful for all your help. While I was overwhelmed by illness and on the verge of losing my health, your warm words encouraged me and helped me find confidence to face my illness."



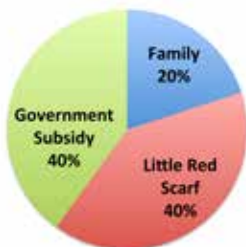
Number of Successful Heart Surgeries



Key Project Indicators

Sector: Congenital Heart Disease Surgery

Total Surgeries	866
Median Cost per Surgery	\$4000
Average Sponsorship per Surgery	\$1600

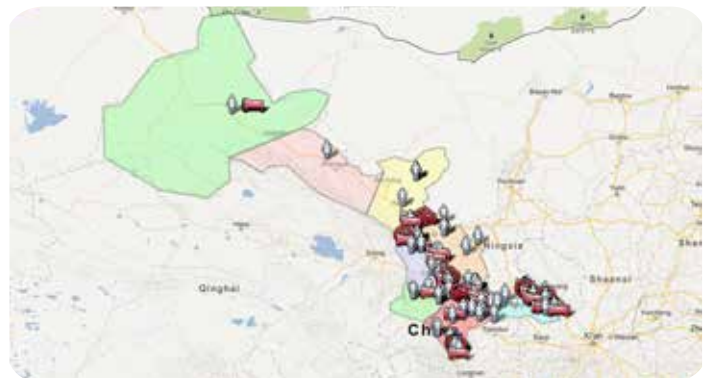


Income Statement (Jan-Nov 2012)

USD (\$)

2011 Remaining Balance	\$112,255
Revenue	
TFish Funding	0
Other Revenue (Chao Foundation)	\$350,000
Total Revenue	\$350,000
Expenses	
Program Expenses	\$277,287
Administrative Expenses	0
All Other Expenses	0
Total Expenses	\$277,287
Cash Balance	\$184,968

Children on Gansu Map



Lives Saved Over the Years





Xingzhi Migrant Art Class



Year Founded: 2007
TFish Member Since: 2012



Region:
Beijing, China



Leader:
Director Gu



Cause:
Education

Art liberates children's minds and empowers them to creatively engage with the world. Director Gu, a talented artist and teacher, understood this and aspired to teach art to children from poor, marginalized families who otherwise would never receive such opportunity.

In 2007, he started providing free art lessons for migrant youth, helping them develop self-confidence and self-sufficiency through innovative art and design education. With support from the TFish Fund, Director Gu's hope is to eventually run an art studio, providing greater opportunities for learning for his students.



In October, TFish founders Mr. and Mrs. Chao and Nancy Nguyen visited the art school. There, they were presented a beautiful gift from a student, and they also got to see many of the students hard at work!



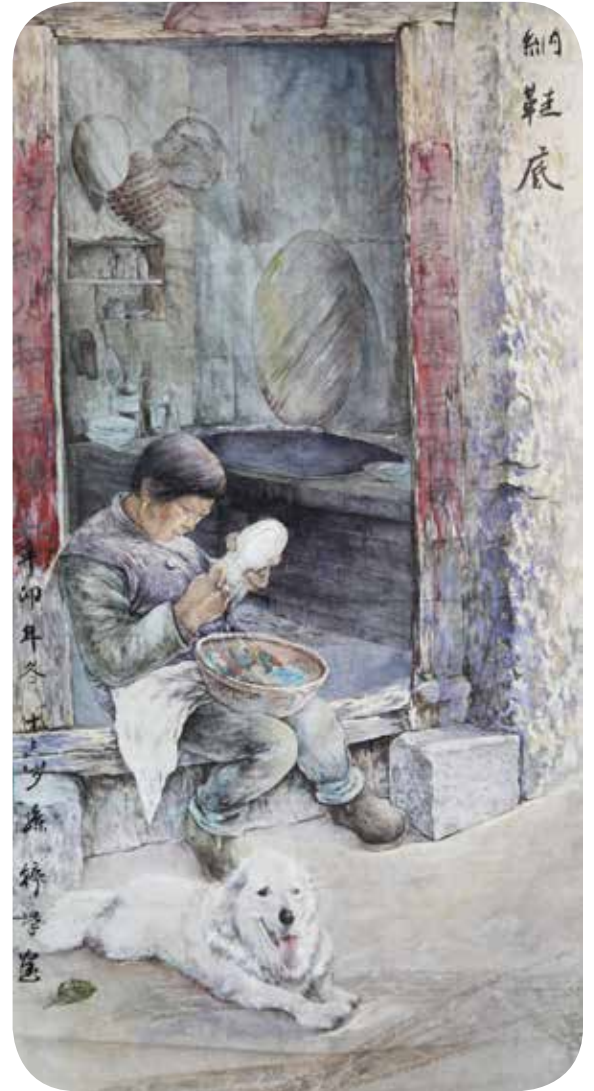
Director Gu advises his student as she works on an impressive mural-sized pencil drawing.



There was no school beyond middle school for this young lady because she was a poor migrant student from Hebei. Director Gu of Xingzhi Art School took her in and taught her how to draw. Now, she is an art teacher at an elementary school.



Director Gu often takes his students out on field trips and encourages them to interact with and find inspiration in nature.



Beginning in 2013, TFish will fund the development of a new Art & Design Studio specialized in graphic design, including English courses. This is to fulfill Director Gu's vision of one day providing migrant children the opportunity to earn a living with their skills despite being hindered from obtaining regular education.





Beijing Normal University Center for Service Learning



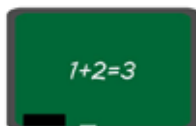
Year Founded: 2010
TFish Member Since: 2010



Region:
Beijing, China



Leader:
Lifu Shang



Cause:
Education

In 2010, a team of young scholars, educators and social entrepreneurs established The Center for Service Learning under the School of Social Development and Public Policy at Beijing Normal University, the leading university in shaping the future of education in China. The Center launched an ambitious 5-year program to develop and introduce Service Learning to Chinese students in grades 1-6.

The program's goal is to help advance Chinese education beyond its current textbook-and-lecture-oriented structure, so that students will be able to access greater creativity, learn to problem solve, and become more socially responsible. Its impact could be profound and long-lasting.



Based on solid research and social science experiments, the strategy consists of multi-pronged efforts involving the students and all the other stakeholders - the parents, school officials, education policymakers and community organizers.

By the end of this year, the preliminary curriculum for Grade 1-6 Service Learning has been developed. The program has selected eight schools for trial implementations under the supervision of Beijing Haidian School District.

This program is funded by Ping and Amy Chao Family Foundation.



Service Learning Guides for parents, teachers, and community organizers.



Service learning workbooks for students grade 1-6.



Elementary school students and their parents put service learning to action!



Wild Lily Nutrition



Year Founded: 2010
TFish Member Since: 2011



Region:
Guangxi, China



Leader:
Mr. Fang



Cause:
Basic Needs

In the destitute mountain villages of Western China, Wild Lily runs an “Egg Program,” which provides eggs as part of school lunches. Eggs are rich in protein, vitamin D and fat, and by daily offering these eggs, Wild Lily hopes to provide poor schoolchildren with more complete and healthy nutrition. Wild Lily also measures the impact of its work by collaborating with local physicians.



On Oct. 30, TFish staff Wang Jun embarked on a journey on winding gravel roads to visit a school where Wild Lily has been running its successful Egg Program.



Following a 2-hour travel across rugged terrains, Wang Jun finally arrived at the Victory Elementary School.

There, she met children who simultaneously stole and broke her heart. Each of the children was so beautiful, vivacious, and smart, but their life circumstances prevented them from reaching their fullest potential.



But, as the eyes and smiles of the children suggest, there is hope! If Wild Lily continues its much needed work, the lives of these children can be bettered, one egg at a time.



Helping Orphans Worldwide EB Skin Disease



Year Founded: 2007
TFish Member Since: 2011



Region:
Vietnam



Leader:
Hillary Brown



Cause:
Medical

EB (Epidermolysis Bullosa) is a rare genetic skin disease that causes the skin to be so fragile that even the slightest touch will separate the layers of the skin. Often in Vietnam, these children are forced to fend for themselves, but Helping Orphans Worldwide (HOW) strives to provide care and hope so that these children can pursue less painful lives.



Huy is a delightful 13-year-old boy who, as a result of E.B., is missing the genes needed to attach his skin to his flesh. It is as painful as it sounds, and he needs constant, specific, and expensive medical care. Add this to the heat and poverty, and you can only begin to imagine what Huy has to deal with on a daily basis.



In late October, TFish President, Nancy, got to visit Vietnam and finally meet in person Huy and HOW's founder Hillary Brown. Despite his condition, Huy was incredibly vibrant, articulate, and intelligent.



Khoi is one of several unfortunate children that HOW works to help. He suffers from a severe case of EB, which requires 3 to 5 hours for his 20-year-old mother to daily provide wound care treatment. With no electricity, clean water, or even a place to buy nutritious milk, his situation is dire, but that is why HOW's work is so crucial.





Light of Love



Year Founded: 2008
TFish Member Since: 2011



Region:
Guizhou, China



Leader:
Dai Xianwei



Cause:
Poverty

Light of Love is a volunteer group established in 2008 by students of the China Pharmaceutical University. The group aims to develop health education in rural areas in Western China to teach people how to safely use medicine. This past year, they also provided lunches to an elementary school in Guizhou, an effort funded by the TFish Fund.



In recent years, grassroots NGOs have been developing rapidly across China, claiming an irreplaceable role in society through benefiting all types of people in different places. There has even been a frenzy among college students to participate more in public service, and Light of Love has been a proud byproduct of such a movement.

In 2010, Light of Love organized a summer education program in Guizhou. Through the program, and upon making many home visits, they started discovering that the majority of their students came from extreme poverty. They had single or no parents, ill family members, and lacking food and shelter.



Providing education, as important as it is, was simply not enough to meet the children's immediate needs. As a result, Light of Love started providing nutritious meals, called "love lunches," to students at elementary schools in rural Western China. Their hope is to spread more of their love to more children, so that the children can grow up well and become a light of love themselves.





Little Red Scarf CARE



Year Founded: 2011
TFish Member Since: 2011



Region:
Gansu, China



Leader:
Yunyun Jie



Cause:
Poverty

LRS Care aims to alleviate poverty in rural areas of northwest China, such as Gansu Province. They provide scholarships for middle school, high school, and college students in financial need. LRS Care also delivers free nutrition boxes and school supplies for children after heart surgery. The goal of the program is to create a network of families in poverty to provide resources and relief for them.



Remember CunHua from LRS? Here, she enjoys a celebration with the LRS Care staff and the other children for her successful surgery!



Like CunHua, all of our LRS children receive love, care, and support following their surgeries so that they recover as quickly as possible. This young gal smiles gleefully after being handed her new school supplies.

Extra food and supplies encourage the youth to keep fighting for their best.



In June, LRS Care celebrated its 800th surgery provided for children with congenital heart surgery. The NGO has come long ways since its beginning in 2005, and they are en route to meeting their goal of 1000 surgeries by the end of this year. This is all possible because of donors like you!



Mrs. Zhou Psychological Counseling Center



Year Founded: 2000
TFish Member Since: 2011



Region:
Hebei, China



Leader:
Mrs. Zhou



Cause:
Community

Since 2000, Mrs. Zhou has been serving as a volunteer counselor for women and children in rural areas who struggle with anxiety, depression, and other mental health issues. She regularly gives talks and engages in initiatives to raise awareness about psychological and emotional struggles for women.



On their fifth counseling session, Mrs. Zhou and one of her patients took a little nature hike. Throughout the hike, the two discussed deep topics: life, nature, and the future. Mrs. Zhou was very touched by her patient's enthusiasm regarding her passions and aspirations. On the way down from the climb, they came across an old shepherd. He was extremely poor and had little to live off of, but he really enjoyed reading. Ms. Zhou offered to bring him books and magazines the next time she traveled up the mountain.

Mrs. Zhou was invited to a small village to give a talk to the women there. The women had no choice but to depend on their husbands for everything; they didn't have any professional education and mainly stayed at home to take care of the children. Mrs. Zhou felt a compassion to reach out to these women and inspire them to strive for interests they might have beyond the home.



Above: Mrs. Zhou encounters an unexpected counseling opportunity. In April, Mrs. Zhou was waiting at a railroad station when a woman came by. She recognized Mrs. Zhou and asked her to help her teenage son, who struggled with an Internet addiction. She offered her advice as well as her contact information. When it was time to get on the train, the conductor found them a set of seats so that they could sit together and continue to talk. That day, Mrs. Zhou found a new friend in a stranger.



Hemophilia Home of China



Year Founded: 2009

TFish Member Since: 2011



Region:
China



Leader:
Guan Tao



Cause:
Medical

Hemophilia is a rare genetic disease that prevents blood from naturally clotting. Joints, muscles, and internal organs are all at risk for hemorrhaging; and without effective medical treatment, hemophilia can lead to permanent disability and even death.

Fortunately, with early enough intervention, many patients can enjoy normal lives. The Hemophilia Home of China raises funds for the expensive treatment and partners with treatment centers for the early detection and treatment of hemophiliac children.



The Mid-Autumn Festival is a time of reunion for families and friends. In spirit of this festival, Home of China visited Pu Wei (pictured middle). He is unable to attend school because of his severe hemophilia, and his family's tight finances have prevented him from receiving the treatment that he needs. Home of China strives to provide support to patients like Pu Wei, hoping that people will no longer have to suffer from this terrible illness.

Pengpeng and Qiqi are two boys who have painfully suffered from hemophilia all of their lives. As these photos indicate, the constant hemorrhaging and bruising of their knees have made walking extremely difficult.



In addition to their debilitating disease, Pengpeng and Qiqi, like most other beneficiaries of Home of China, have to face the difficult realities of poverty. Clotting factors are expensive, and even after making great sacrifices, families can barely afford the necessary and crucial treatments for hemophilia.

However, there are NGOs like the Home of China that labor to serve the needs of these children. There are individuals like you who sympathize and care - and so, there is yet hope. Thank you for joining this fight to bring life to these youth who require and deserve our help.





Burma Humanitarian Mission



Year Founded: 1999
TFish Member Since: 2011



Region:
Burma



Leader:
Mr. Isherwood



Cause:
Medical

The Burma Humanitarian Mission (BHM) advocates for a democratic Burma where equality and the rights of the Burmese - much like those in the rest of the world - are protected. They aim to improve the lives of those living in the conflict zones of Burma, such as the Karen State, by providing healthcare services in the form of backpack medics and supporting their freedom through monetary means. To reinforce these efforts, The Chao Foundation will match your donation dollar for dollar when you make a donation online.

To combat this troubling situation, BHM assists and empowers the Burmese people as they develop their own solutions. They respond to the people's initiatives, doing their best to provide support whenever it is requested. Today, BHM partners with the Backpack Medic Teams to train medics in eastern Burma to serve over 50,000 villagers, and also supports education efforts that touch over 500,000 lives annually.



In 2012, BHM provided 1 million doses of medicine, which the medics used with tremendous results. In areas where the backpack medics operated, deaths from malaria decreased by 48% and deaths from dysentery declined by 51%. Child mortality rates reduced from 20 deaths to 14 deaths per 100 children – a 30% reduction. Maternal mortality rates fell four-fold compared to historical averages for those in eastern Burma lacking backpack medics.



The ethnic minorities in eastern and northern Burma suffer significant health problems due to austere conditions and poverty. As a result, health challenges, such as malaria, dysentery and complications from child birth, have dramatically high mortality rates due to the lack of care and available medicines.





Xian Volunteer Association



Year Founded: 2006
TFish Member Since: 2012



Region:
Shaanxi, China



Leader:
Kong Bing



Cause:
Volunteerism

The Xi'an Volunteer Association is one of the most active public service organizations located in the ancient city of Xi'an. It routinely mobilizes over 6000 volunteers and 5000 online micro-bloggers, in addition to mobilizing 150-200 charitable events year-round with support from hundreds of colleges and local businesses.



Xi'an Volunteer Association workers routinely make visits to rural schools and homes, where they give out donated school supplies and clothing so that the children can have resources to study and remain warm for the upcoming winter. Realizing the difficulties that these children have to face, Xi'an works to bring them relief and reasons to smile.

One of the organization's major projects is to help underprivileged students pay for their tuition and school supplies and provide them employment after school so that they can give back to their communities. Xi'an Volunteer Association also cultivates student volunteers through various public service activities.

Below: a 40-year-old man with Osteogenesis Imperfecta, a bone disease that has earned its sufferers the nickname "porcelain doll". In November, he was happy to receive visit from the Xi'an volunteers, who made sure he was getting the care and treatment he needed.



Right: a little boy admitted to the Xi'an Children's Hospital for his nephrotic syndrome also received a care visit in August.



Despite the rain, these Xi'an volunteers are hard at work with environmental projects around the city park. Their bright red hats and clothing got soaked but they persisted, and the community took notice of their good service.

Special Thanks

Thank you to all of our donors and volunteers for supporting the cause of TFish Fund. We want to especially thank the individuals listed below for their tremendous encouragement and continued support throughout the year. We express our deepest gratitude for your love, care, and friendship.

Paul & Cindy Chan

Dr. & Mrs. Henry & Lisa Chang

Mr. & Mrs. Dean Chang

May & Kai Chao

Dr. Eric Cho

Dr. & Mrs. Edmund & Kitty Cheng

Joe & Chin Hsu

Dr. Paul Huang & Family

Lyon & Anne Lin

Jonathan & Tammy Liu

Douglas & Vanessa Tsui

Dr. & Mrs. L T Wang

Bao & Thuy Nguyen

Steve Ko

Janna Wang

Angel Heart International & Dr. Shouyan Lee

Chinese Christian Herald Crusades & Ms. Katie Chau



Transparent Fish Fund

445 S San Antonio Rd Suite 204

Los Altos, California 94022

Phone: (650) 924-1104

Email: tfishfund@gmail.com

Online Donations: www.tfishfund.org

Sponsored by



P I N G & A M Y C H A O
F A M I L Y F O U N D A T I O N